

Kärkiupottimet 1-leikkuinen, 90°

PERTIK

M421

Ø D	max/min	Lieriövarrella		Kartiovarrella	
		d mm	L mm	Kartio	L mm
4	1 - 4	4	40		
5	1 - 5	5	40		
6	1 - 6	6	40		
8	1 - 8	6	40		
10	1 - 10	6	45		
12	2 - 12	8	50		
15	2 - 15	8	55	MK1	91
20	2 - 20	10	65	MK1	96
25	3 - 25	12	78	MK1	101
30	3 - 30	12	88	MK2	120
35	4 - 35	16	103	MK2	133
40	5 - 40	16	118	MK3	160
50	12 - 50	16	126	MK3	168
63	12 - 63			MK3	182
80	14 - 80			MK4	229

Kärkiupottimet 1-leikkuinen, 60°

PERTIK

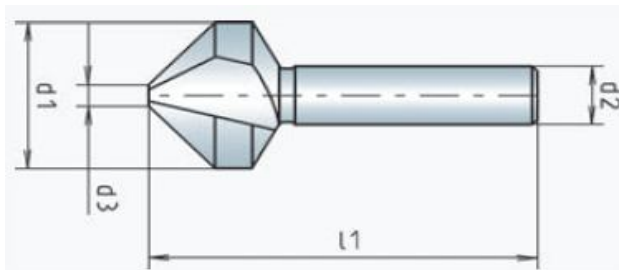
M422

Ø D	min/max	Lieriövarrella		Kartiovarrella	
		d mm	L mm	Kartio	L mm
6	1 - 6	6	43		
10	1 - 10	6	49		
12	2 - 12	8	53		
15	2 - 15	8	60	MK1	96
20	2 - 20	10	72	MK1	104
25	3 - 25	12	87	MK1	106
30	3 - 30	12	93	MK2	125
35	5 - 35			MK2	144
40	8 - 40			MK3	172
50	10 - 50			MK3	183
80	10 - 80			MK4	239

Kärkiupottimet

3-leikkuinen, 90°, HSS+5% Co

PERTIK



M431

Ø D mm	min/max mm	Lieriövarrella		Kartiovarrella	
		d mm	L mm	Kartio	L mm
4,3	1.3 - 4.3	4	40		
5,0	1.5 - 5.0	4	40		
5,3	1.5 - 5.3	4	40		
5,8	1.5 - 5.8	5	45		
6,0	1.5 - 6.0	5	45		
6,3	1.5 - 6.3	5	45		
7,0	1.8 - 7.0	6	50		
7,3	1.8 - 7.3	6	50		
8,0	2.0 - 8.0	6	50		
8,3	2.0 - 8.3	6	50		
9,0	2.2 - 9.0	6	50		
9,4	2.2 - 9.4	6	50		
10,0	2.5 - 10.0	6	50		
10,4	2.5 - 10.4	6	50	MK1	84
11,5	2.5 - 11.5	8	56		
12,0	2.8 - 12.0	8	56		
12,4	2.8 - 12.4	8	56	MK1	87
13,4	2.8 - 13.4	8	56		
14,4	2.9 - 14.4	8	56		
15,0	3.2 - 15.0	10	60		
16,5	3.2 - 16.5	10	60	MK1	90
19,0	3.5 - 19.0	10	63		
20,5	3.5 - 20.5	10	63	MK1	94

Jatkuu seuraavalla sivulla.

Kärkiupottimet

3-leikkuinen, 90°, HSS+5% Co

PERTIK

M431

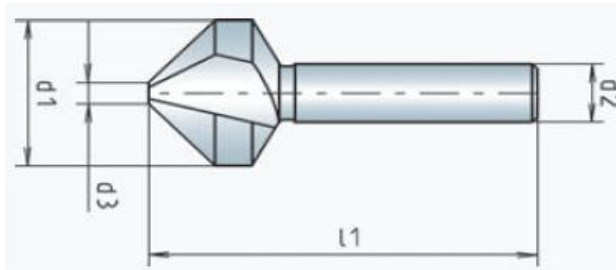
Jatkoa edelliseltä sivulta.

Ø D	min/max	Lieriövarrella		Kartiovarrella	
		d mm	L mm	Kartio	L mm
23,0	3.8 - 23.0	10	67		
25,0	3.8 - 25.0	10	67	MK2	105
26,0	3.8 - 26.0	10	67		
28,0	4.0 - 28.0	12	71	MK2	
30,0	4.2 - 30.0	12	71		
31,0	4.2 - 31.0	12	71	MK2	131
34,0	7.0 - 34.0			MK2	133
35,0	7.0 - 35.0			MK2	133
37,0	7.0 - 37.0			MK2	145
40,0	8.0 - 40.0			MK2	160
50,0	10.0 - 50.0			MK2	168
63,0	10.0 - 63.0			MK2	182
80,0	14.0 - 80.0			MK2	229
100,0	40.0 - 100.0			MK2	185
125,0	50.0 - 125.0			MK2	192

Kärkiupottimet

PERTIK

3-leikkuinen, 90°, HSS+8% Co

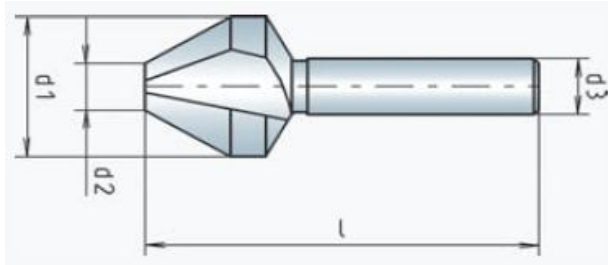


M436

Ø D	min/max	Lieriövarrella	
		d mm	L mm
mm	mm		
6,3	1.3 - 6.3	5	45
8,6	1.8 - 8.3	6	50
10,4	2.2 - 10,4	6	50
12,4	2.5 - 12.4	8	56
16,5	2.8 - 16.5	10	60
20,5	3.0 - 20.5	10	63
25,0	3.2 - 25.0	10	67
31,0	3.5 - 31.0	12	71
50,0	5.0 - 50.0	16	126

Kärkiupottimet 3-leikkuinen

PERTIK



M432 - 60°

Ø D mm	min/max mm	Lieriövarrella		Kartiovarrella	
		d mm	L mm	Kartio	L mm
6,3	1.5 - 6.3	5	47		
8,3	2.0 - 8.3	6	52		
10,4	2.5 - 10.4	6	53		
12,4	3.0 - 12.4	8	60		
16,5	4.0 - 16.5	10	65	MK1	94
20,5	4.0 - 20.5	10	69	MK1	100
25,0	5.0 - 25.0	10	75	MK2	112
31,0	6.0 - 31.0	12	81	MK2	141
40,0	6.0 - 31.0			MK3	172
50,0	10.0 - 50.0			MK3	183
63,0	10.0 - 63.0			MK3	201
80,0	14.0 - 80.0			MK4	253